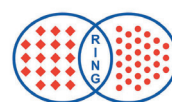
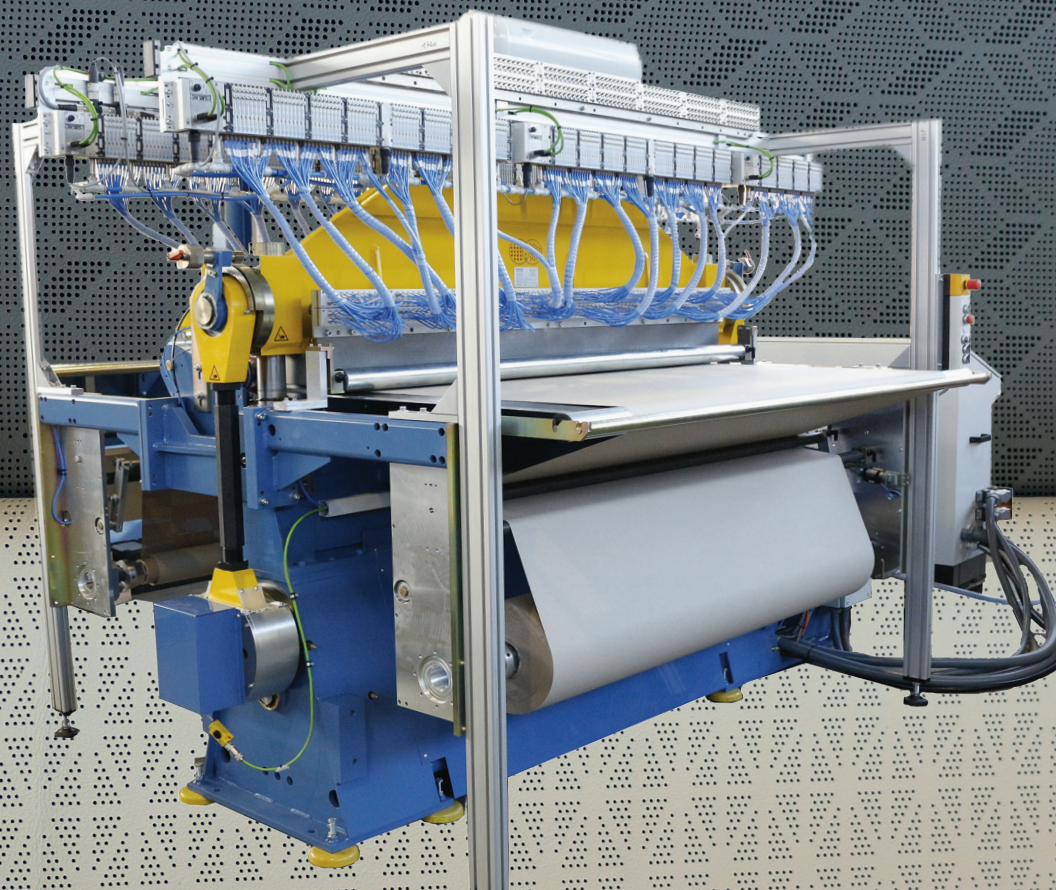


ME-Technologie



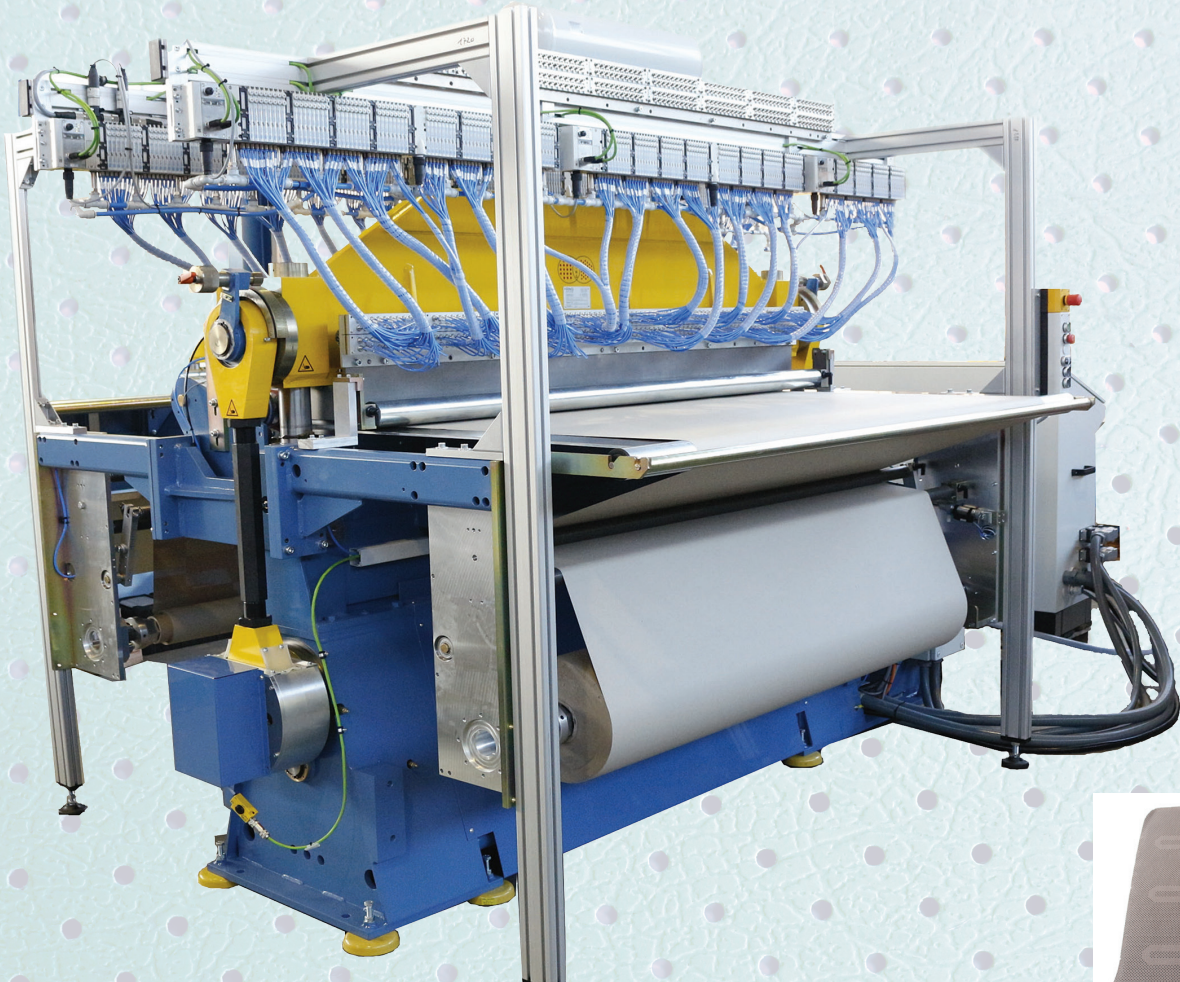
Ring Group



Typ **ST90D-1600-ME**
Ausblenden von Lochstempeln

Typ ME-Technologie

Ausblenden von Lochstempeln

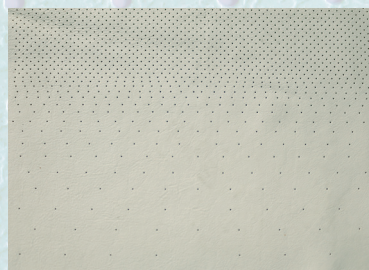
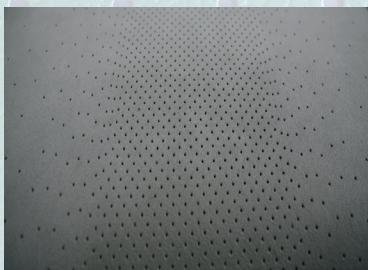
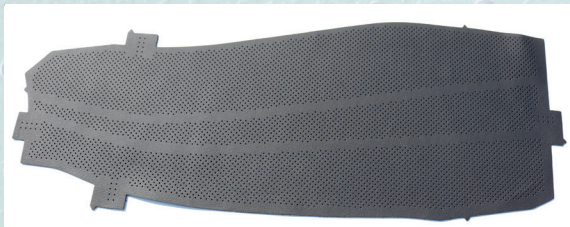


Ausblendtechnologie geeignet für:

- ME-Werkzeuge bis zu 640 (1024) Ventile
- Block- oder Einzel-Ansteuerung
- Bis zu 4 Lochstempeldurchmesser in einem Werkzeug
- Mit einem Werkzeug mehrere Design darstellen (>250)
- Plazierte Perforation

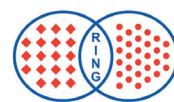
Gating technology suitable for:

- ME tools up to 640 (1024) valves
- Block or single pin control
- Up to 4 pin sizes in one tool
- Multiple designs possible with one tool (> 250)
- Placed perforation



Typ ME-Q-Technologie

Zusätzliche Querbewegung der Standard & ME-Perforierwerkzeuge



Ring Group



Ausblendtechnologie mit Querverschiebung

siehe ME Beschreibung

+ Querverschiebung

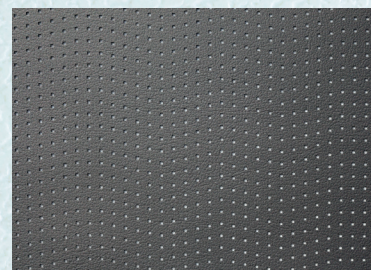
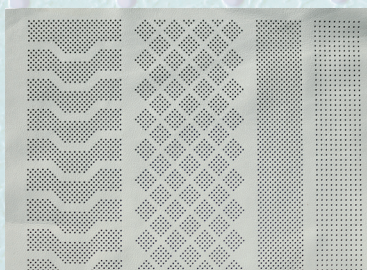
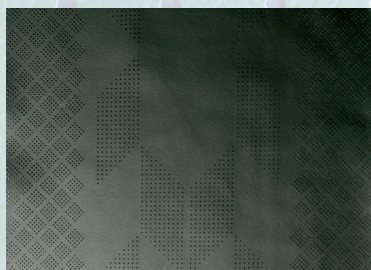
= Designmöglichkeit ohne Rapport

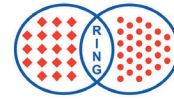
Gating technology with moving tool

see ME description

+ tool shift

= Design possibility without repeat





Ring Group



Ring Maschinenbau GmbH
Blocksbergstraße 151 | D-66955 Pirmasens
Tel. + 49 6331 5181-0 | Fax : + 49 6331 92422
Email: info@ring-group.com

www.ring-group.com